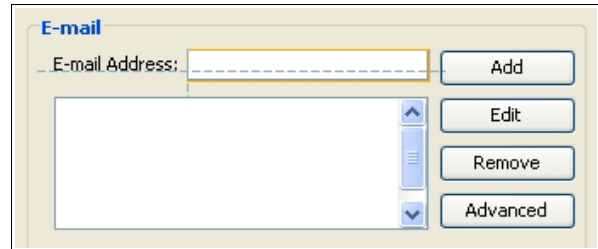


NetBeans™ IDE 5.0

The NetBeans™ IDE 5.0 has many new features, all designed to improve your productivity. New features include comprehensive support for developing IDE modules and rich client applications based on the NetBeans platform; Matisse, the new intuitive GUI-builder; new and redesigned CVS support; WebLogic9 and JBoss 4 support; and many editor enhancements.

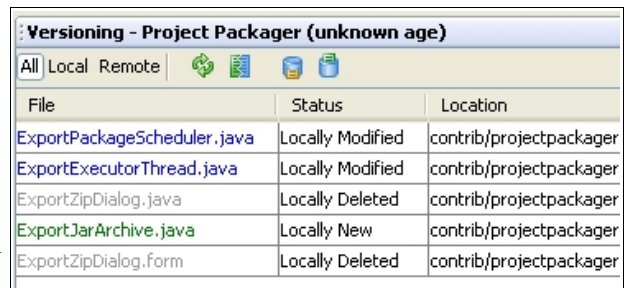
New Features in NetBeans 5.0

- **Matisse GUI Builder:** Allows you to create professional- looking GUIs easily and intuitively without having to understand the complexities of Swing layout managers. As you drag and drop components into a form, the IDE suggests alignment, spacing, and resizing constraints.



- **Editing improvements:** Provide more editing features that make programming easier. NetBeans IDE 5.0 features include a component palette for code snippets, error stripe indicating code that can't be compiled, an improved SQL editor, and easier XML DTD and schema addition. Code completion and refactoring have also been improved.

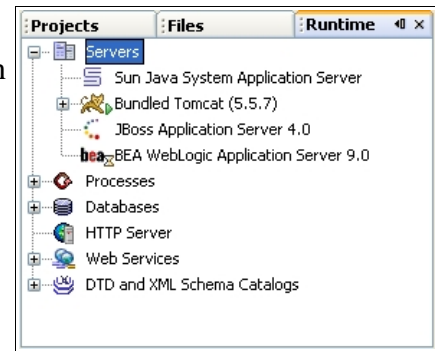
- **Version Control:** Integrates central version control (CVS) into your workflow. The IDE recognizes CVS working directories and lists all changed files in the Versioning window. Also, you can update and commit from the main IDE windows.



File	Status	Location
ExportPackageScheduler.java	Locally Modified	contrib/projectpackager
ExportExecutorThread.java	Locally Modified	contrib/projectpackager
ExportZipDialog.java	Locally Deleted	contrib/projectpackager
ExportJarArchive.java	Locally New	contrib/projectpackager
ExportZipDialog.form	Locally Deleted	contrib/projectpackager

- **NetBeans IDE Module Development:** Provides new templates in the New Project and New File wizards to generate all the files and code you need to build your application. You can configure API dependencies, MANIFEST.MF entries, and other project metadata with the Project Properties dialog box.

- **Enterprise Development:** Supports several servers, including the Sun Java System Application Server 8.1, JBoss 4, and WebLogic 9. The New Project wizard helps you work with both JavaServer (TM) Faces (JSF) and Struts. You can use the New File wizard templates to create JSF Managed Beans, Struts Actions, and Struts Form Beans. Web Services support has also been improved.



- **New NetBeans IDE Add-on Packs:** Offers several new add-on packages. NetBeans Developer Collaboration lets you discuss and share code with other developers live, over the network. The Mobility Packs lets you write, test, and debug applications for mobile devices. The NetBeans Profiler helps memory and CPU usage optimization.

The NetBeans Platform



As before, the NetBeans IDE 5.0 supports rich-client application development. Most desktop applications have common requirements such as menus, document management, and settings. We assume you'd rather spend your time focusing on business logic rather than writing menu code or setting storage code. The NetBeans Platform provides robust prebuilt components, which solve common problems. You can reuse and mix and match them as needed. The NetBeans Platform also provides a set of standards to enhance and enforce consistency and interoperability across applications and platforms. Just write modules to implement what you need, bundle them up with the NetBeans Platform, and you have a beautiful, branded, cross-platform application.

Supported Software

Operating Systems

The NetBeans IDE runs on operating systems that support the Java Virtual Machine. The NetBeans IDE has been tested on these platforms:

- Microsoft Windows XP Professional SP2
- Microsoft Windows 2000 Professional SP3
- Solaris (TM) 9, 10 Operating Systems (SPARC (R) and Sun(TM) x86 Platform Editions)
- Red Hat Enterprise Linux 3
- Sun Java(TM) Desktop System
- Mac OS X 10.3

NetBeans IDE 5.0 supports the following software

Application Servers

Sun Java (TM) System Application Server
Platform Edition, 8.2
Apache Tomcat 5.5
JBoss 4.0
WebLogic 9

Database Servers

IBM DB2 8.1
Oracle 9i
PointBase 4.2

Microsoft SQL 2000 SP3
MySQL 4.x

Version Control Systems

CVS 1.11
PVCS 7.5
Microsoft VSS 6.0
ClearCase
StarTeam
Subversion
TeamWare

For More Information

Visit www.netbeans.org for demos, tutorials, technical articles. Join the vibrant community of committed, open-source developers that is the NetBeans project.

