

Checkout

Steps

1. Subversion Repository

2. **Folders to Checkout**

Specify the folder(s) to checkout from Subversion repository.

Repository Folder(s): 

Browse...

Repository Revision: 

Search...

(empty means repository HEAD)

☐ Skip "FMCGLinuxMobile" and checkout only its content

Specify the local folder to checkout folders into.

Local Folder: 

Browse...

(local Subversion working copy)

☒ Scan for Netbeans Projects after Checkout

< Back

Next: >

Finish

Cancel

Help

Checkout

Steps

1. Subversion Repository

2. **Folders to Checkout**

Specify the folder(s) to checkout from Subversion repository.

Repository Folder(s): 

Browse...

Repository Revision: 

Search...

(empty means repository HEAD)

☐ Skip "FMCGLinuxMobile" and checkout only its content

Specify the local folder to checkout folders into.

Local Folder: 

Browse...

(local Subversion working copy)

☒ Scan for Netbeans Projects after Checkout

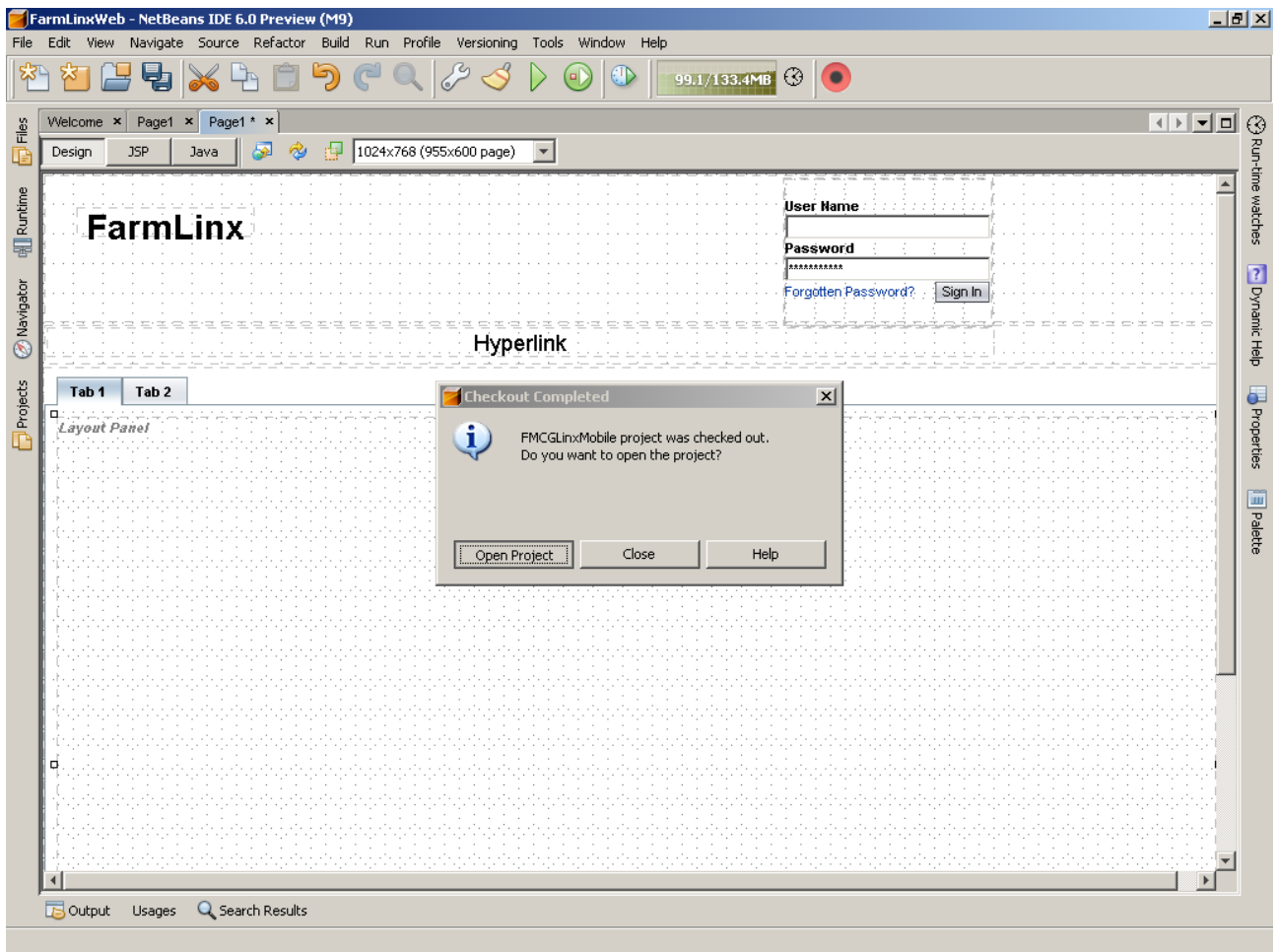
< Back

Next: >

Finish

Cancel

Help



Boom! This time around the whole Netbeans Froze... Twice....