

NETBEANS IDE 7.1

THE SMARTER WAY TO CODE

KEY FEATURES AND BENEFITS

DEVELOP PROFESSIONAL
DESKTOP, ENTERPRISE,
WEB, AND MOBILE
APPLICATIONS

FEATURES

- Java EE 6 development
GlassFish 3.1.1,
WebLogic 12c,
and many other servers
- Modular and extensible
application framework
for JavaFX and Swing desktop
applications
- Java SE development
including Swing GUI builder
- Java Mobile development
Java Card development
- Other languages, e.g.,
JavaScript, PHP, C/C++
- Integrated access to
version control,
issue trackers,
continuous build servers, and
application & web servers
- Free download,
no license fees

BENEFITS

- Reduce development costs
- Reduce testing costs
- Reduce maintenance costs

RELATED PRODUCTS AND SERVICES

COMPANION PRODUCTS

- JavaFX 2.0
- Java SE
- Java EE
- Java ME
- Oracle GlassFish Server
- Oracle WebLogic Server
- Oracle JDeveloper
- Oracle Enterprise Pack for Eclipse

The NetBeans integrated development environment (IDE) is a free software development tool for professionals who create enterprise, web, desktop, and mobile applications. Visit NetBeans.org and tap into the power of one of the largest open-source developer communities! NetBeans IDE is available for Windows, Mac, Linux, and Oracle Solaris.

A Key to Your Productivity

An IDE is more than just a text editor: it's a set of integrated tools that assist you with the typical development workflow of coding, testing and debugging, profiling, compiling, running, and deploying applications. With NetBeans IDE, it is easy to effectively write your code, manage and build large software projects, and maintain control of multiple file revisions in a team environment.

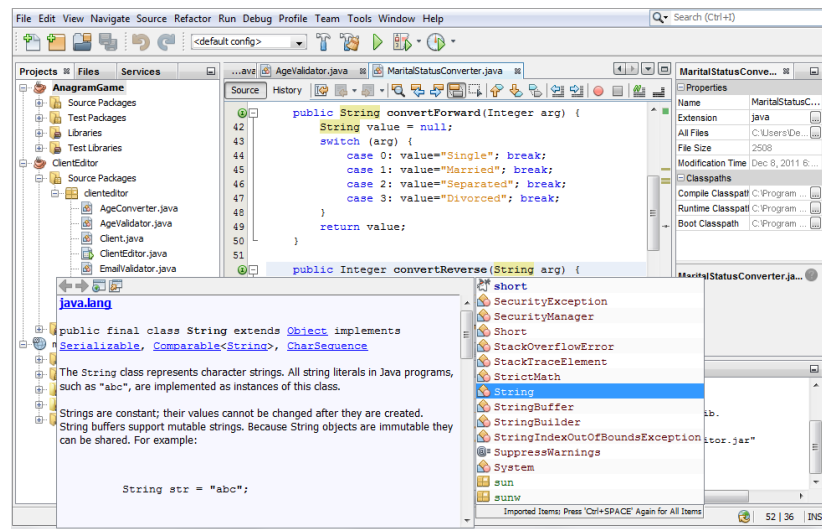


Figure: NetBeans IDE with Java tools

Java Platform, Enterprise Development

The Java EE 6 platform provides proven strengths in scalability, reliability and security, and the NetBeans IDE is developed hand in hand with GlassFish and WebLogic in making the latest language and platform improvements easily available to developers. The NetBeans IDE was the first development environment to provide full support for the Java EE 6 platform, including support for newly introduced specifications for Contexts and Dependency Injections (JSR 299), JavaServer Faces 2.0 (facelets), EJB 3.1 in web applications and more.

Now, in addition to PrimeFaces, it supports additional JSF component frameworks, in particular, RichFaces and IceFaces. You can also use the NetBeans IDE for development with the Java Persistence API, servlets, JavaServer Pages (JSP), Spring, Struts, and Hibernate frameworks, as well as web services. With the NetBeans IDE, you can smoothly deploy Web applications to a variety of servers, including the bundled GlassFish Server Open Source Edition 3.1.1 and WebLogic 12c, as well as Apache Tomcat and JBoss.

The NetBeans Platform

NetBeans is not only an IDE, but also a rock-solid application framework for creating JavaFX and Swing applications that run everywhere the Java Virtual Machine is installed. The [NetBeans Platform](#) provides common services that are used in all large desktop applications: window management, menus and toolbars, settings and storage, an update manager, and an installer generator. Reusing these open-source components saves you work and time that you can spend focusing on your application's business logic. The NetBeans Platform is fully interoperable with OSGi bundles and provides a convenient way of connecting NetBeans Platform applications to backends via web services and databases.

Java Desktop Applications

Efficiently write Java code and design professional Java Swing GUIs for Java desktop applications. The award winning NetBeans GUI Builder lets you design GUIs by dragging and positioning UI components. It automatically takes care of the correct spacing and alignment, but still gives you the freedom to customize your code. You can combine the NetBeans GUI Builder and the NetBeans Platform to efficiently develop Swing desktop applications.

JavaFX Development

NetBeans IDE is the first tool to provide support for applications using the JavaFX 2.0 Platform. In addition to a powerful JavaFX 2.0 Source Editor and tools for deployment to the desktop and web, the IDE includes an extensive library of samples to help you get started with this technology.

Java Mobile & Java Card Development

With the NetBeans IDE, you can create, test, debug, and deploy applications that will run on mobile phones, PDAs, set-top boxes, embedded systems — literally billions of devices. The NetBeans IDE comes bundled with the latest Java ME SDK 3.0 which supports both CLDC and CDC development.

In the IDE, you can also write for Java Card Platform 3.0, which is a JVM that runs on smart cards. The IDE supports Java Card projects, Java Card applet deployment, and a Java Card device console. The NetBeans IDE simplifies development with its Visual Mobile Designer and Mobile Game Builder, and it supports SVG components, data binding, and over-the-air (OTA) emulation.

PHP and C/C++

Speed up development of light-weight web applications, as well as C/C++ applications, by taking advantage of the IDE's smooth integration with PHP and C/C++. Advanced editors with features such as templates, code completion, and syntax coloring are combined with debuggers, profilers, and framework support.

Integrated Developer Services

The NetBeans IDE gives you direct access to your databases, version controlled repositories, continuous build servers, and issue trackers. You can browse and modify databases, manage web and application servers, and effectively build and manage your projects. The NetBeans IDE is the industry leader in its support for Apache Maven, a software project tool to manage a project's dependencies, builds, tests, and documentation. Open, build, run, profile and deploy your existing Maven projects, or create new ones based on Maven Archetypes accessed via the IDE.

Licensing Support

The NetBeans IDE and NetBeans Platform are free, open-source software. After you download the NetBeans software, you can use it for commercial and non-commercial purposes right away. There are no license costs for any kind of usage of the NetBeans IDE or the NetBeans Platform. You can sell applications you created, and you are not required to open-source your own code (but you can). The NetBeans source code is available under a dual license consisting of the Common Development and Distribution License (CDDL) v1.0 and the GNU General Public License (GPL) v2. This means that only in the rare case that you modified sources of the NetBeans Platform itself, you need to publish these changes so that the community can benefit from possible improvements.

If your company requires additional professional services, Oracle does offer support contracts as part of the [Oracle Development Tools Support](#) offering.

Contact Us

For more information about NetBeans IDE, please visit netbeans.org or call +1.800.ORACLE1 to speak to an Oracle representative.



Oracle is committed to developing practices and products that help protect the environment

Copyright © 2011, Oracle and/or its affiliates. All rights reserved.

This document is provided for information purposes only and the contents hereof are subject to change without notice. This document is not warranted to be error-free, nor subject to any other warranties or conditions, whether expressed orally or implied in law, including implied warranties and conditions of merchantability or fitness for a particular purpose. We specifically disclaim any liability with respect to this document and no contractual obligations are formed either directly or indirectly by this document. This document may not be reproduced or transmitted in any form or by any means, electronic or mechanical, for any purpose, without our prior written permission.

Oracle and Java are registered trademarks of Oracle and/or its affiliates. Other names may be trademarks of their respective owners.

AMD, Opteron, the AMD logo, and the AMD Opteron logo are trademarks or registered trademarks of Advanced Micro Devices. Intel and Intel Xeon are trademarks or registered trademarks of Intel Corporation. All SPARC trademarks are used under license and are trademarks or registered trademarks of SPARC International, Inc. UNIX is a registered trademark licensed through X/Open Company, Ltd. 0110